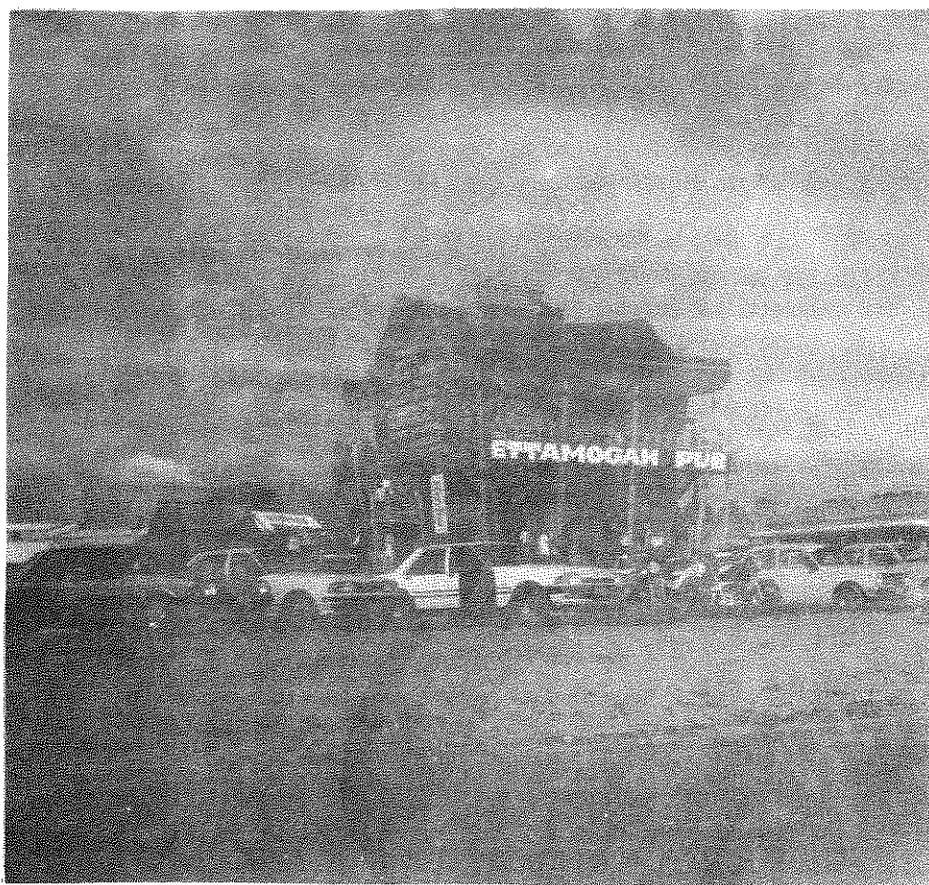


FREE WHEELING

JULY 1987



ROSS ST.
HEATHERTON RD
7 PM.

COMMITTEE 1986 - 1987

PRES David Heard
16 Hardy St.
Selby 3159
754 8406

VICE PRES Pat Casey
11 Patterson St
Carnegie 3153
570 6452

SEC Mark Templeton
55 Martin st
Belgrave 3160
754 3667

TREAS Rob Aylton
8 Minerva Cres
Vermont Sth 3133
232 0378

ASS SEC Tom Brachna
11 Sunnyvale Crt
Hampton Park 3976
799 1998

SOC Gloria Templeton
SEC 55 Martin st
Belgrave 3160
754 3667

COMMITTEE Steve Alder
5 Corramar Cres
Belgrave 3160
754 7294

Murray Shaw
53 Liverpool Rd
Kilsyth 3137
725 4037

Brian Tuck
9 Peterfields Crt
The Basin 3154
762 5981

ASSOCIATION DELEGATES

Ricky Rycken
798 8506

Peter Pink
763 7434

Tom Brachna
799 1998

TRIP CLASSIFICATIONS:

~~763-8052~~

'A' Grade: Extensive use of 4 WD. Tracks may be difficult to negotiate chains should be carried along with towing slings and anchor points, good winter tread pattern tyres are a must. Trip leader has the right to refuse a vehicle if above points are not met. Types of conditions likely to be met include: steep climbs and descents on all surfaces - rocky, muddy, mud & snow, deep river crossing and overgrown tracks.
Max, 6 Vehicles

'B' Grade: Virtually same conditions as 'A' Grade but track condition is more favourable. Good tyres are a must as well as necessary recovery gear.
Max, 10 Vehicles

'C' Grade: Very limited use of 4 wd. These trips include car rallys ect. Type of tyres does not matter and recovery gear still essential.
No Max. Vehicles,

In all above cases Vehicles should be in sound mechanical condition and carry the basic spare part requirement as listed in previous Newsletters.

The Committee would like to express the fact that if in the opinion of the trip leader a vehicle is not suitable for a trip, then that vehicle may be refused permission to partake.

Newsletter items to Mark Templeton by General Meetings at the latest.

MEETINGS LAST TUESDAY OF THE
MONTH AT THE DANDENONG LIBRARY

CORRESPONDENCE
P.O. BOX 778
DANDENONG VIC 3175

PLEASE TRY TO SUPPORT OUR SPONSORS AS THEY ARE SUPPORTING US!!!!!!!!!!!!!!

5 BEWSELL AVE
SCORSBY
763-8052

PRESIDENTS REPORT JULY 1987

The end of another financial year, a government election, group certificates (where did all that money go?), tax returns and the big one, V.F.W.D.C. Inc. Committee elections. Just when you thought you could relax, you've also got Tom's orientation days at Big River Camp and the A.G.M. dinner at The Cabaret Theatre Restaurant, not to mention next months Bush Dance. Now that you have all this clear in your mind, start thinking about subscriptions and raffle tickets, both due next meeting.

If that's not enough to keep you entertained, there is the popular annual snow trip on the 1st-2nd of August. I presume we will meet at the usual location which is the third bridge on the Wellington River on the Howitt Road. For new members, head towards Licola (last fuel) and turn right just before the town, keep on this road and if you run out of bitumen you have gone too far, back up 50 metres and look down to your left, this is it.

Thanks to Murray Shaw for his work on the committee over the last twelve months, Murray is standing down, so too is Patrick Casey who has been Vice Pres. for the last two years. Special thanks Patrick for your work in my absences, and the rest of the committee for the last twelve months. Mark Templeton has put in a superlative effort as secretary and magazine producer. To Mark and Gloria, who have worked countless hours so you can have a newsletter, thanks again, it's a big enough job getting a Pres. report let along all the rest.



See you at the A.G.M.

DAVE HEARD

ELECTIONS

Nominations were taken last meeting for the 1987 - 1988 committee. You have now had a month to have a good think over how you can help this club. If you wish to stand on the committee ask someone to nominate you for that position.

Please make an extra effort to attend the July 28th meeting, this is an important night as the committee elected by you, will do its best to run the club for you the member.

While thinking about that, have a think about these nominations so far.

PRESIDENT: STEVE ALDER & DAVE HEARD

VICE PRESIDENT: STEVE ALDER, TOM BRACHNA, DAVE HEARD
& BRIAN TUCK

TREASURER: ROB AYTON, MICHELLE HEARD & GLORIA TEMPLETON

SECRETARY: MICHELLE HEARD & MARK TEMPLETON

ASSISTANT SECRETARY: MICHELLE HEARD & GLORIA TEMPLETON

SOCIAL SECRETARY: MICHELLE HEARD & BRIAN TUCK

COMMITTEE: STEVE ALDER, TOM BRACHNA, JAMES LEE,
STEPHEN LEE, ROD LEE, JOHN SMITH,
RICKY RYCKEN & BRIAN TUCK

PLEASE NOTE THAT TO BE ABLE
TO VOTE YOU MUST BE A FINACIAL
MEMBER.

BOTH CLUB FEES AND CLUB RADIO
FEES MUST BE PAYED IN BY JULY
28th.

PORT PUZZLER


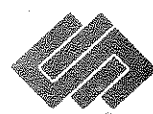





The response to our first Port Puzzler competition was disappointing. More involvement by club members will be necessary for this segment of our magazine to continue. You do not have to know all the answers to submit an entry. The winner of June's Puzzler is Sharon Harvey, who is either extremely clever, or has seen this particular puzzle before, as she had the correct answers for all the questions. A bottle of Brown Bros. Reserve Port is awaiting her collection at the July meeting.

Here is the solutions ;

- | | |
|---|---|
| 1. 12 people in a jury | 2. 64 squares on a chess board |
| 3. 43 beans in each cup | 4. 20,000 leagues under the sea |
| 5. 9 lives of a cat | 6. 147 maximum breaks in snooker |
| 7. 8 sides in an octagon | 8. 11 herbs and spices in Kentucky Fried |
| 9. 36 black keys on a piano | 10. 30 days has September |
| 11. Answer not required as info is outdated | 12. 1½ glasses of Dairy Milk in every block |
| 13. 5 vowels in the alphabet | 14. 8 o's in Woolloomooloo |
| 15. 2001 a space Odyssey | 16. 2 wrongs don't make a right |
| 17. 5 channels on a television in Melb, | 18. 55 days in Peking |
| 19. 3 colours in the Union Jack | 20. 2204 pages in Melbourne Yellow Pages |
| 21. 18 fairways on a golf course | 22. 45 numbers in Tattsлото |
| 23. 180 maximum score in darts | 24. 4 jacks in a deck of cards |

Here is this month's PORT PUZZLER

The following is a mixture of well known and fairly well - known symbols and logos. WE invite you to name the users:-

				
1 _____	2 <u>BROKOFF</u>	3 <u>ROSELLA</u>	4 _____	5 <u>YAMAHA</u>
				
6 <u>BHP</u>	7 <u>ARMAGUARD</u>	8 _____	9 _____	10 <u>SUZUKI</u>
				
11 <u>Capt. Snooze</u>	12 <u>ALCAN</u>	13 <u>BIADSEVE</u>	14 <u>INTERFLORA</u>	15 _____
				
16 _____	17 _____	18 _____	19 <u>mitsubishi</u>	20 _____

Submit as many answers as you can, Don't let the cost of a postage stamp deter you.

All entries to be sent to: **PORT PUZZLER**
21 BEILBY STREET
BAYSWATER 3153

Closing Date for Entries 12th August

W I N E T O U R
2 2 N D M A Y 1 9 8 7

Roll Call;

Don & Thelma Montague - Troop Carrier
Cam & Olive, Maggie & Bonnie - Hi-Lux - Duel Cab
Tom, Liola, Dustin, Lee & Spike - Hi-Lux - Duel Cab
Bluey & Don - Troop Carrier
Ron, Alex & Maryann Cam - Hi-Lux Tray Top
Neil, Norma, Kellie, Matthew & Shaun - Hi-Lux - Duel Cab

The wind was icy as we departed Truck City with Cam & Olive, and our trip leader Don & Thelma at 7.30 p.m. on the Friday. The trip along the Hume Highway was uneventful and we arrived at Wahgunyah about 10.30 p.m., meeting up with Bluey & Don on the outskirts of the town.

We were in the process of setting up camp along the banks of the Murray River, when Tom, Liola & family arrived. The night sky cleared, then followed the essential camp fire and port.

The sun was shining when we left camp Saturday, passing through Rutherglen and Springhurst, along the Hume Highway to Wangaratta, through Oxley to Milawa and "Brown Bro's" Winery, the weather having turned wet by this time.

Ron, Alex & Maryann joined the party and we enjoyed some ports amongst other things, and the open fire at Brown Bro's.

The next winery was "Stanton and Killeen" where a ginger and white kitten thoroughly enjoyed the attention of the young numbers of our party. More purchases were made here, and in bigger volume. Liola admired the beautiful fuschia garden.

"Campbells" Winery was next on the list. There "Empire Port" was a tempting purchase few could resist. We were able to follow a self-guiding tour here which proved most interesting.

We arrived at "Bullers" Winery at 1.15pm for lunch. The drizzle cleared and Tom decided to get some exercise by racing around the picnic tables, cooling the steaming "little boys". The avairies here contained many varieties of birds.

WINE TOUR CONT.....

"Chambers Rosewood" Winery was our next "port of call". There old family photo albums were there for us to view, and proved most interesting, as did their wines.

"St Leonards" Winery was impressive with its humungus (sorry Tom) white metal gates on matching brick pillars with lights on top. The scenery here was most attractive with a winding river in the distance. Enormous sprinklers sat in the vineyard. There were about 100 feet across, 12 feet high, and fed by a 4 inch pipe.

We travelled over the border to Corowa to visit "Lindemans" Winery. They were giving a 15% discount on their delights, so we made the most of it. The oak beams in the large, old brick building were full of character, and the pot belly stove completed the atmosphere.

We travelled back to camp, our pockets very much lighter than when we departed.

Back at camp, Don & Thelma realized they had no table or chairs, so Don fashioned "Fred Flinstone" furniture from a discarded table-tennis table and logs of wood, using Tom's chain saw; VERY EFFECTIVE!! Thelma christened Don's camp oven later on, cooking some delicious scones over the camp fire.

Sunday morning Blue & Don left early to go elsewhere. We packed up camp & were on the road a short time when Don's Landcruiser blew a tyre. The damage was quickly remedied and we found ourselves viewing "Fairfield" Vineyard (which was closed to the public) from the front fence. The mansion is in the process of being renovated.

Next we visited "Morris's" Winery. Many of us stocked up, some with the Cobourg Peninsula in mind. The Navy Port is to be highly recommended.

We followed the Hume Highway through Albury to the Ettamogah Pub. It was just as it appears in the magazine, complete with an old truck on the roof (a 1929 T model ford or dodge). We climbed the distorted stairs to the top bar which was jammed full of tourists. Spike, Maggie and Bonnie were suitably impressed with the dog kennel which was a half tank complete with television set, and beer glasses inside, and antenna on the roof.

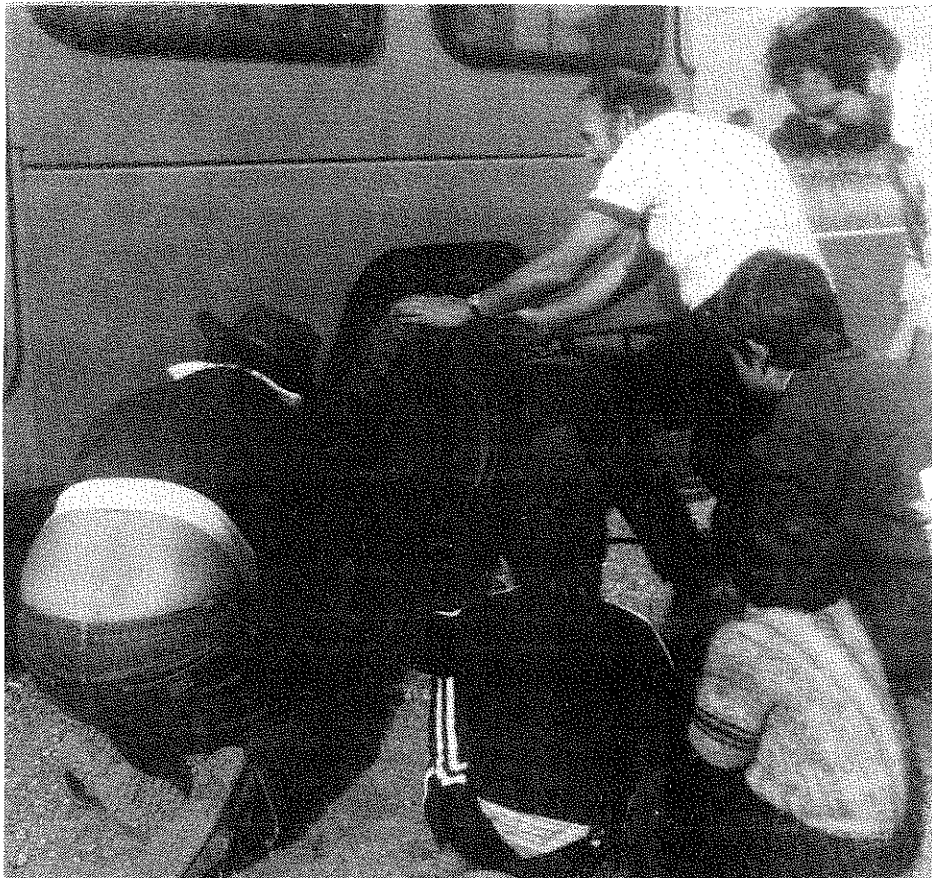
Outside a 1939 Lantz Bulldog tractor was chugging around with a trailer of kids sitting on hay bales. The riding speed was so slow, it was possible to count the revolutions at 180 rpm.

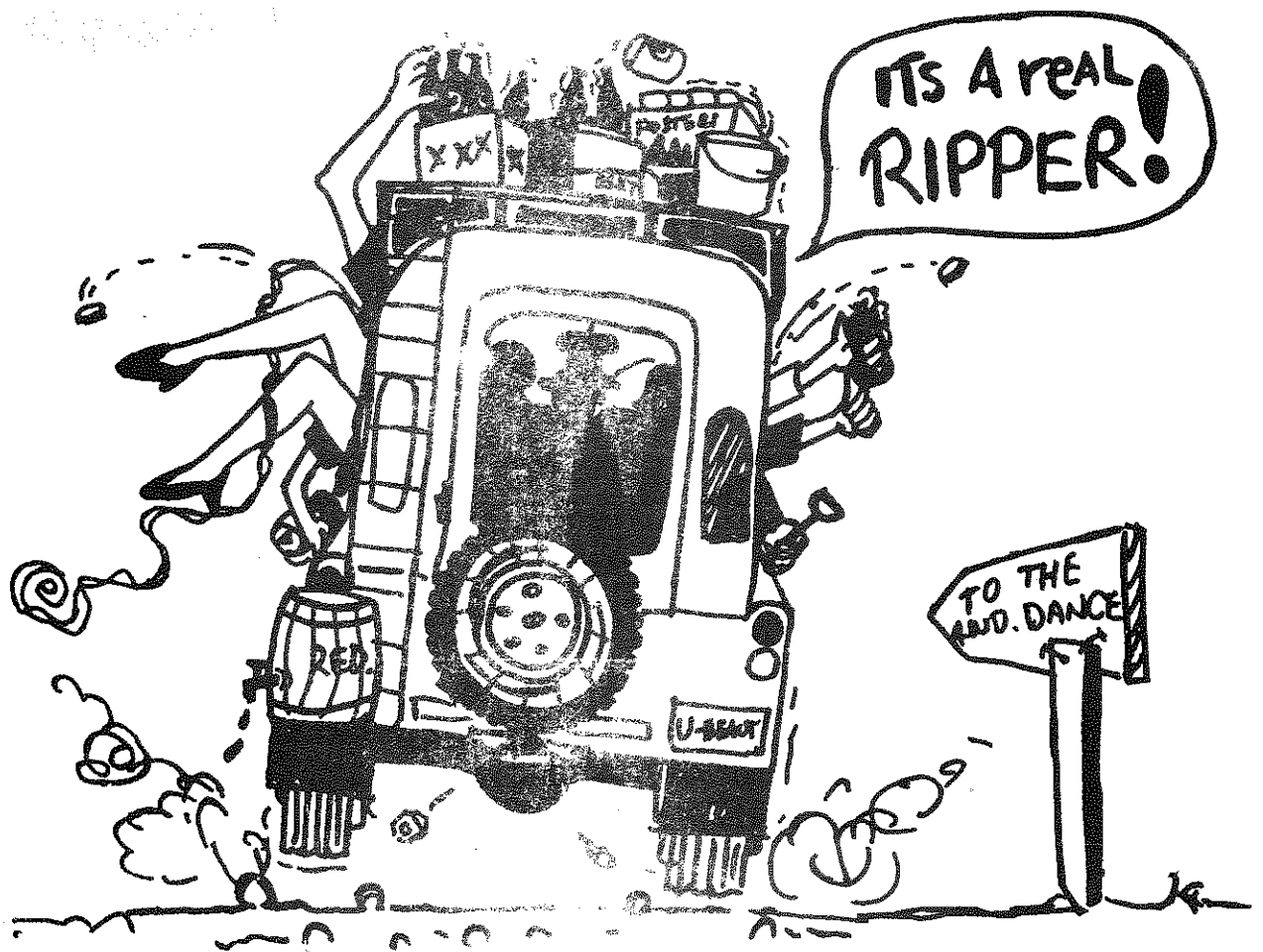
WINE TOUR CONT.....

We made our way to the Riverina Highway, lunching at Heywoods Bridge. At 2.45pm we headed for home along the Murray Valley Highway, through Bonegilla and Benalla.

Thank you to everyone who participated in the weekend, specially Don and Thelma. We had a really great time and feel sure that everyone else enjoyed themselves too.

NEIL & NORMA STEPHENSON





VICTORIAN 4 WHEEL DRIVE CLUB INC
fancy dress!!.....Ya' gotta dress up!!

ANNUAL BUSH DANCE

SATURDAY 15th AUGUST
HEATHERTON HALL
CENTRE DANDENONG RD.
HEATHERTON

so get your friends together and make
up a party table.

\$ 10 a head

B.Y.O.

Tickets available from committee.

FOUR WHEEL DRIVE INSURANCE

THE ORIGINAL 4WD INSURANCE SCHEME, PROVIDING SERVICE TO THE FOUR WHEEL DRIVER SINCE 1979. OUR POLICY INCLUDES FULL "OFF ROAD" COVER ANYWHERE IN AUSTRALIA.

PROMPT CLAIMS HANDLING PROCEDURES WITH YOUR CHOICE OF REPAIRER.

CHECK OUR FEATURES:

- A free windscreen cover.
- Vehicle spares, accessories and tools automatically included in vehicle cover.
- CB radios automatically included to \$500. (Higher limits can be arranged).
- Cover for trailer to \$250.
- Modifications allowed.
- Camping equipment cover available.

LOVE & HUGHES PTY. LTD.

INSURANCE BROKERS

261 LOWER HEIDELBERG ROAD, EAST IVANHOE
Telephone: (03) 497 4666 Telex: AA38947

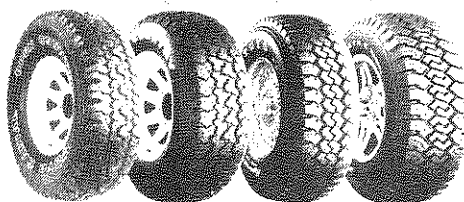


All other classes of Domestic, Commercial & Industrial Insurances arranged.

Members of National Insurance Brokers Association of Australia Ltd. (Inc. in Vic.)

WHEN THE GOING GETS TOUGH

STOP PRESS!
TOYO BLITZES WYNNS SAFARI
Congratulations to Pie Pfitzner - first privateer to finish the gruelling Wynns Safari and first to finish on standard road tyres. Pie ran the complete rally on one set of six Toyo Open Country tyres - the tyres that are available to you now from your Toyo hi-tech tyre dealer.



Aggressive, deep block tread patterns provide outstanding tolerance to hard work, while the special profile reinforced side walls resist cuts and damage and reduce vehicle ride harshness.

With steel breaker construction and special tread compounds for puncture resistance and long wear, Toyo tyres are tough.

They are designed to immediately cope with all surface conditions from city driving to rugged open country rock-climbing traction.

Toyo Hi-tech tyres
Made to meet the Aussie challenge



FREE! TOYO GEAR BAG
To obtain your free Toyo Gear Bag, see your Club Secretary for details.

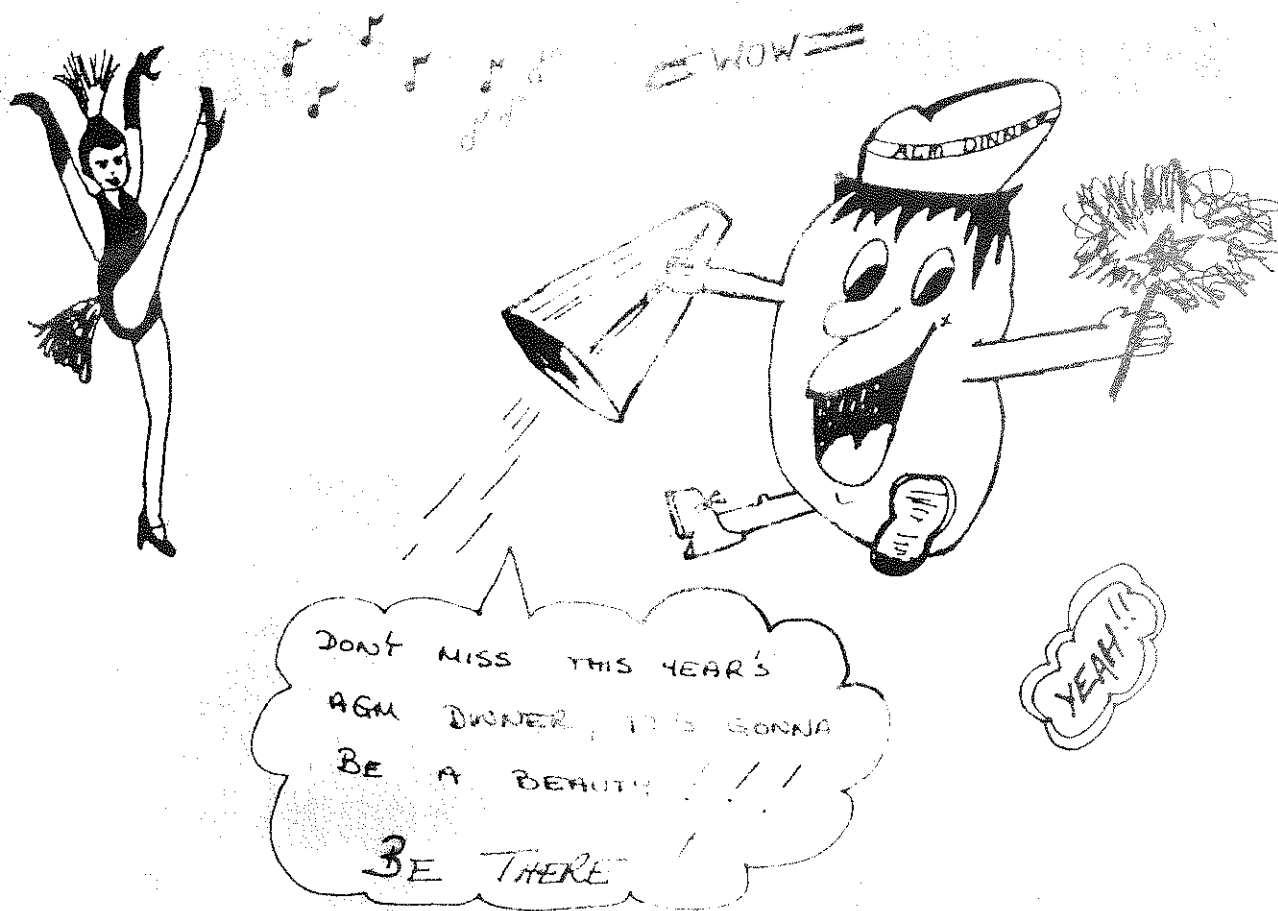
For professional, technical advice and details of your nearest Toyo dealer contact Toyo today.

SYDNEY (02) 642 0177
HUNTER VALLEY (065) 74 6583

CANBERRA (062) 806 8000
BRISBANE (07) 277 9755

TOWNSVILLE (077) 79 0499
MELBOURNE (03) 460 2444

ADELAIDE (08) 260 4666
PERTH (09) 478 1377



VICTORIAN 4 WHEEL DRIVE CLUB INC.

A.G.M. DINNER

SATURDAY 25th JULY

7-00pm.

CABARET THEATRE RESTAURANT

29 MACAULEY PLACE

BAYSWATER

4 COURSE DINNER

B.Y.O.

\$ 25per HEAD

THE BALANCE OF \$15 each
TO THE COMMITTEE BY NEXT
MEETING.

Victoria Association of Four Wheel Drive Clubs' Inc.



**ANNUAL REPORT
1986/87**

VICTORIA ASSOCIATION OF FOUR WHEEL DRIVE CLUBS INCORPORATED

MEMBER CLUBS' 1986/87

Adventist Four Wheel Drive Club Inc.
Bairnsdale Four Wheel Drive Social Club
Ballarat Four Wheel Drive Club Inc.
Beechworth Four Wheel Drive Club
Bellarine Four Wheel Drive Club
Bendigo Four Wheel Drive Club Inc.
Cross Country Jeep Club Inc.
Dandenong Ranges Four Wheel Drive Club
Diamond Valley Four Wheel Drive Club
Geelong Four Wheel Drive Club Inc.
Gippsland Four Wheel Drive Club Inc.
Goulburn Valley Four Wheel Drive Club Inc.
Grampians Four Wheel Drive Club Inc.
Holden Drover/Suzuki Four Wheel Drive Club of Victoria Inc.
Toyota Hilux Four Wheel Drive Club Inc.
Land Rover Owners' Club of Victoria Ltd (Inc.)
Latrobe Valley Four Wheel Drive Club Inc.
Mallee Four Wheel Drive Club Inc.
Maroondah Overlanders 4x4 Club Inc.
Mountain Districts Four Wheel Drive Club
Nepean Four Wheel Drive Club Inc.
Nissan Patrol Club of Victoria Inc.
North Central Four Wheel Drive Club
Otway Four Wheel Drive Club Inc.
Pajero Four Wheel Drive Club of Victoria Inc.
Peninsula Four Wheel Drive Club Inc.
Phoenix Four Wheel Drive Touring Club
Range Rover Club of Australia Victoria Branch Inc.
Subaru Four Wheel Drive Club of Victoria Inc.
Thompson Valley Four Wheel Drive Club
Toyota Landcruiser Club of Australia Victoria Inc.
Victorian Four Wheel Drive Club Inc.
Victoria Police Four Wheel Drive Club Inc.
Victoria Scout Four Wheel Drive Service Unit
Wanderin' Four Wheelers
Wangaratta Four Wheel Drive Club Inc.
Werribee Four Wheel Drive Club
West Coast Four Wheel Drive Club Inc.
Westernport & Districts Four Wheel Drive Club Inc.
Wimmera Four Wheel Drive Club Inc.
Yarraman Four Wheel Drive Club
Yarra Valley Four Wheel Drive Club Inc.

ANNUAL REPORT 1986/87

HIGHLIGHTS OF YEAR

- * Incorporation of Association
- * Adoption of Marketing Strategy
- * Continued growth of VAFWDC, with 7 new Clubs' joining, and assistance provided to a further 6 groups forming clubs'
- * Successful participation in 4 x 2 WD Show at Exhibition Buildings
- * Hosting ANFWDC meeting in Melbourne and bush dance
- * Greater liaison with C.F.L. Regional Managers' and conservation groups
- * Preparation of Draft policies on 4WD Touring
- * Raising of professional image of Association
- * On going computerization of public land-use reports
- * Representation at first International meeting of 4WD Associations in USA
- * Community assistance grant received from Department of Sport & Recreation
- * Financial assistance received from Melbourne City Toyota
- * Distribution of 20,000 4WD brochures
- * Association assistance at 4WD Extravaganza
- * Alpine national park bill continued to be defeated in Parliament
- * Continued expansion of clubs', and provision of driver training courses

VICTORIA ASSOCIATION OF FOUR WHEEL DRIVE CLUBS INCORPORATED

ANNUAL REPORT 1986/87

PRESIDENT'S REPORT

It is with pleasure that I present the 12th Annual Report of the Victoria Association of Four Wheel Drive Clubs' Incorporated. As many will notice for the first time, the word incorporated appears behind our name. It has been a prolonged task formulating our incorporation document, and it is a major achievement to report it is now behind us.

Club and delegate interest and participation has ensured the final document has been extensively aired. A tremendous amount of work has been undertaken by Neville Lester and Bernard Parfrey in shaping our incorporation document into an acceptable form for Corporate Affairs.

I acknowledge the time and efforts of these two members in completing this task

The result being that the Association now has corporate status and the Committee of Management and delegates are now afforded the security inherent in the Act.

Incorporation has seen the first major reorganisation of the management of the Association, and in tandem with this has been the on going concern at raising the professional image and performance of the Association. The issues of incorporation, the on going review and delegate reinforcement of the need for professionalism in everything we do, have been an often distracting influence throughout the year. Some other areas of Association activity have suffered with the amount of resources spent on these issues, but nevertheless I firmly believe it was a necessary transition period and the principles contained within the incorporation document and associated guidelines produced for Committee positions and sub-committees are positive directives for all future Association growth.

Professionalism is now governed to a certain extent by responsibilities contained within the Incorporation Act which determines when and where certain activities must take place. The process of management of the Association is now streamlined with clear lines of authority and reporting procedures.

At all times members of clubs', delegates and individuals working on Association matters need to remember that they are presenting a face of the Association and if presenting written matter, ensure it is professionally typed and presented, the information is factual, and when in doubt, make no statement at all. The Association has demonstrated its ability to respond to the communication demands with minutes of General and Committee meetings distributed directly to Clubs' and to delegates at meetings. Similarly, other documentation has been prepared and efficiently distributed.

Another important keystone finalised by the Association in 1987 has been the adoption of a Marketing Plan.

President's Report

This Plan reviewed our performance and has plotted future directions needs and means of obtaining results. Tasks have been placed in manageable units and financial constraints need not necessarily hamper the workings of the plan. I look to the future with confidence and anticipation as the Association now has the structure, personnel, and plan for purposeful growth and development. With the administrative and managerial platforms on firm footing and planned future directions, members can look to an exciting future for the Association. The structure is in place and we have resources of manpower and individual skills available to be utilised. The sub-committee structure may be expanded to deal with specific tasks, as an efficient sub-committee can be an invaluable resource to the Committee of Management in reviewing projects and/or suggesting actions and projects.

The overhaul is nearly complete, but members must not allow complacency to replace involvement. We need your contribution, as ultimately it is the future of our recreation that is at stake.

The challenge is before the Association and we are in a unique position to accept this challenge and respond positively. Financially our assets have marginally improved, but professionalism comes at a price, and if the current high levels of communication are to be maintained additional income must be generated. For the second year running the Association has been fortunate to receive a grant (\$1000) from the Department of Sport & Recreation and a donation of \$2000 from Melbourne City Toyota for the reprint of brochures. I acknowledge these grants and sincerely thank the Department and Company involved. In addition the Australian National Four Wheel Drive Council provided \$2500 to the Association for assisting in the running of events at the 4WD Extravaganza.

I would like to acknowledge and record a debt of gratitude to the enormous amount of voluntary manhours contributed to the Association by the Executive over the past year. Secretarial chores alone now involve a minimum of 25-30 hours per month. Obviously our willing "workhorses" cannot be driven into the ground and encouragement, acknowledgement and support go along way to sustaining the enthusiasm and many late nights!

During the year all Committee members have had specific tasks and by spreading the load, key personnel have been freed to attend to priority matters.

Our Association is about people, and the rights of these individuals and families to responsibly tour and have access to public land in Victoria. In this respect I pay tribute to my Executive who have had a difficult year in fulfilling their tasks and maintaining the momentum and implementation of Association policies and direction.

The year has been punctuated by changes to the Committee, and it is a necessary criteria for maximum stability and productivity of a Committee, that nominating candidates be aware of the responsibilities of office. They must be in a position to be able to fulfill their term of office and to devote the time required to the task at hand.

In July we saw the resignation of John Cribbes from the position of Vice-President, and in February the resignation of Secretary, Esther Cribbes was received. The Association's ability to perform to all our member clubs' expectations were reduced, and unfortunately additional workloads were carried by other Committee members.

President's Report

We were fortunate in regaining the services of Bernard Parfrey, following his retirement of 2 months, as Vice-President, and Sandra Marshall capably offered to take over the Secretarial reins.

Keith Hocking changed employment during the year to be based in Shepparton, and it was difficult for Keith to chair both Committee and General meetings each month. We were again fortunate to be able to call on the services of Neville Lester to chair our Committee meetings.

Peter Arnouts has undertaken the Treasurer's job diligently throughout the year, and as a Committee member of many years standing in various positions I again thank Peter for maintaining our finances.

Public Relations was undertaken by John Wilkingson with major efforts at the 4 x 2WD Show and obtaining some publicity for Association activities.

Dave Horne has continued to head the Track Sub-Committee and report on track issues. As a result of an idea obtained at the International 4WD

Association Conference, USA this year, Dave has run with the "adopt-a-track" program, and it is pleasing to see this scheme winning support from several club's at this early stage. It has been enthusiastically endorsed by Conservation, Forests and Lands, and with the full support of clubs' the opportunity exists for clubs to cement on going relations with Regional Land Managers to our mutual advantage. It is a program I hope to see expand in 1988.

Geoff Bingham has looked after new clubs' this year, and has appraised all new club constitutions. Similarly, Geoff has assisted with the constitution, track sub-committee and preparation of Committee position guidelines.

To all the Committee I extend my thanks for their support and effort during the year.

The Environment Sub-Committee has been active in initiating communication with conservation organisations and have been responsible for two interesting meetings with guest speakers. The activity of monitoring our opponents and influencing them is an important role as we have the opportunity to present our viewpoint, while being aware of their activities.

A meeting with the Victoria National Parks Association on the alpine area, explored common concerns and was a fruitful exchange. We also met with the CCV with a view to modifying our joint 4WD policy of 1980. With a new approach, and a greater knowledge of the subject ourselves, we were able to broaden their perceptions of our activities and requirements.

It has been expressed to me several times during the year that the Association has become "too green" and in some respects these observations are accurate. It is perhaps appropriate for the Association to take stock of its direction annually, and for you, the delegates to indicate your thoughts on this or any other matters. Within the pages of the Marketing Plan there is opportunity for all members to contribute to the Association's aims. Involvement with the conservation organisations is an agreed strategy, and similarly there are other avenues where members can direct their energies without becoming involved in conservation issues.

Track access is the principle objective of the Association, and it has always been my policy to encourage member participation in whatever diverse area may assist in achieving this objective. Liaison with the conservation movement is but one means of promoting our image and working to this aim.

President's Report

Access to a maximum number of tracks is not an unrealistic goal within the parameters of responsible environmental and personal safety considerations. The Association is well armed with excellent source material collated annually by the Track Sub-Committee. The usage figures via the land-use reports provide the raw data to which we can refer when preparing submissions. Obviously, our data base is only as good as our sources, and I urge clubs' to always fill in one of these sheets and return it to the Association after all club (and private) trips.

Track closures were officially increased by 37 in 1986 and it is pleasing to report that the Association is enjoying a constructive relationship with the Department of Conservation, Forests and Lands. During the year Frank Noble and Ray Borschman of CFL attended General Meetings and addressed the members. The Association has also had Mr Ian Weir of the National Parks Division of CFL speak at a specially convened meeting.

Access to the Victorian Alps remains a primary objective of the Association and will again require many hours of input during the coming 12 months to keep our name and objectives before the planners of the alpine strategy.

The Association continues to respond to government initiatives and to contribute via submissions. It is unfortunate that there is a trend for submission periods to be unrealistically short, creating great pressure on individuals and the Association to respond fully. It is essential that delegates assist the Association respond to all documents published by the alpine study group and to submit club views.

Despite Parliamentary rejection of the alpine park bill, Minister Kirner has continued to plan for a large alpine park, and in this regard we need to liaise closely with the alpine study group.

The Association has sought representation on the Alpine Advisory Council, and still awaits confirmation of the composition of this Committee and notification of our success, or otherwise.

Despite concerns expressed over track closures, it is interesting to note that the level of delegate inquiry, or reports of track closures has dropped significantly in the past 12 months. Similarly, the efforts of the Wimmera FWD Club to gain access to 'closed' tracks in the Grampians demonstrates that despite closures it is possible to gain permission to traverse some of these tracks in a responsible manner.

As track closures will not decrease in years to come, the primary aim of the Association will be to restrain this growth. It is hoped that eventually special privileges in the form of 'access' will be granted to clubs'.

Our strength remains in growth, numbers and an active membership. As foreseen last year proficiencies of growth have been fulfilled. During the year the Association welcomed seven new clubs'. These being; the Adventist FWDC Inc., Bairnsdale FWD Social Club, Beechworth, Bellarine and Werribee FWD Clubs', Hepean FWDC Inc., and Wimmera FWDC Inc. Three clubs' - Trackers, Woorarra and Ojerriwarrah - were deleted from our membership register. Despite losing these clubs' the Association has now grown to represent 42 Clubs'.

Presidents Report

Most clubs' continue to record a healthy enquiry and conversion rate of new members. Enquiries for assistance to form new clubs have also continued with clubs currently forming/or formed at Hamilton, Mansfield, Warrnambool, Wonangatta and Phillip Island.

Our exposure at the 4x2WD Show again generated many club enquiries and was well supported by the public and industry. We thank I.B. Exhibitions for again generously making available space to the Association. The Association manned a display and had a further static display of vehicles and bush setting. The Toyota Landcruiser Club also were in attendance with an adjoining club display which was very popular. We also thank the Range Rover Club for the donation of several mounted colour photos which were displayed at the show.

The Association failed to capitalise on a similar outstanding opportunity to promote the club movement, by not manning an information tent at the 1st 4WD Action Extravaganza over Easter. The show was well attended by non-clubbed four wheelers and club information stands were sadly lacking. The ANFWDC asked the Association to assist in the running of some 4WD events in July and despite 10 months notice the levels of assistance and participation from Association clubs was notably poor. The exceptions being the Cross Country Jeep Club who transported down, and manned their 'mongrel pull', and the Toyota Landcruiser Club that assisted in skill and 4WD events. The Bellarine FWD Club were the lucky winners of the Promoter's incentive prize of a portable generator.

Undoubtedly public relations and the physical task of being seen at such shows is an area where the Association must become more involved. Similarly, effective media liaison must be coordinated in a professional manner to maximise Association exposure. Several opportunities presented themselves during the year, where a basic lack of cohesion unfortunately marred an excellent opportunity to get our message before the public.

The Association maintains its membership of the Conservation Council of Victoria and the Australian Conservation Foundation. During the year the Association also joined the Friends of the Simpson Desert, and the Mountain Cattlemens Association of Victoria. The Association is a foundation member of the Australian National FWD Council and hosted a meeting in Melbourne in October. The Dandenong Ranges FWDC organised a bush dance for the occasion, and generously donated the proceeds to the Association. Delegates also attended a Council meeting in Sydney during March. With threats to our recreation coming from many quarters it is important for Victoria to continue to show leadership in supporting the National Council.

The VAFWDCI undertakes a wide range of activities - club formation, submission preparation, track investigation, government lobbying, education programs, publicity, community service activities, club support etc - with a common goal of promoting our recreation through education, the club movement, and example to maintain fair and equitable access of public lands.

I thank the club delegates that have regularly attended meetings. Your participation and contribution is vital to our continued success.

BRIAN TANNER
President

Presidents Report

FOOTNOTE:

As a final note I would like to take this opportunity to thank several other members that have given me great support over a number of years.

I retire from the Executive of the Association tonight after 10 interesting years. Firstly as Public Relations Officer and the past 7 as President.

During this time I have been priviledged to have worked with some great performers and contributors, and to have made many friendships.

It was through working with Exective members of the calibre of Peter Sherlock and Ron Camier that gave me the confidence see the "total" picture, and to go on in the Association. Over the years there have been many members that have assisted me, but I would like to individualise just a little and acknowledge the following. John Bell was a very successful Club President with the Geelong Club and Association delegate for several years. It was John that brought me along to my first Association meeting, which just happened to be an AGM, and after which I was PRO. Ian Gray (Secretary), Tony Lester, Peter Arnouts, Phil Ryan, Keith Hocking, Warwick Woods, Barry Holding and Bernard Parfrey have all been contributors to the Association over a number of years.

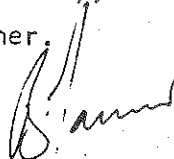
Paramount to the success of any organisation, and in this case the Association is the level of backup facilities available. For about 8 of my 10 years on the Executive Sandra Marshall has been Secretary. Sandra has carried a phenomenal work load for the Association and contributed in so many ways. From getting the Association stand organised - and manning it every day - to so many unobstructive and unheralded tasks, to many hours of work late into the morning and for many unclaimed expenses. Jobs that only those that have worked with her can begin to comprehend. Sandra's contribution has been outstanding and one that I sincerely acknowledge.

The Association has made undoubted progress over the past 12 years and it is not my role to document it here. It is surifice to say that those involved can now look back with satisfaction and achievement at their small role in promoting our great recreation.

I take pride in the collective achievements of many individuals. I thank the delegates and clubs for their support over the years, as it has been my priviledge to be your representative.

Yours sincerely,

Brian Tanner.



VICTORIAN FOUR WHEEL DRIVE CLUB
TRIP DATA.

=====

DESTINATION :

TRIP LEADER :

PHONE NUMBER :

DEPARTURE DATE :

DEPARTURE TIME:

DEPARTURE POINT:

FUEL REQUIRED :

LAST FUEL AVAILABLE:

MAPS REQUIRED :

GRADE : A B C

DURATION :

BASE CAMP : YES NO

NATIONAL PARKS : YES NO

ROUTE VIA :

ACTIVITIES :

SPECIAL CONDITIONS :

PLEASE RETURN TO COMMITTEE 4 WEEKS PRIOR TO TRIP (TO ALLOW PUBLICATION)

ANDERSON'S TOYOTA

THE BRAND-NEW LEGEND

BET YOUR LIFE

IT'S A LAND CRUISER

see: **PAUL JOHNSTON**

* sales

* service

* parts

* accessories

560 9911

560 9222

**Andersons
TOYOTA**

Corner Springvale
& Waverley Rds.
Glen Waverley. 3150.

We know ATOYOT backwards

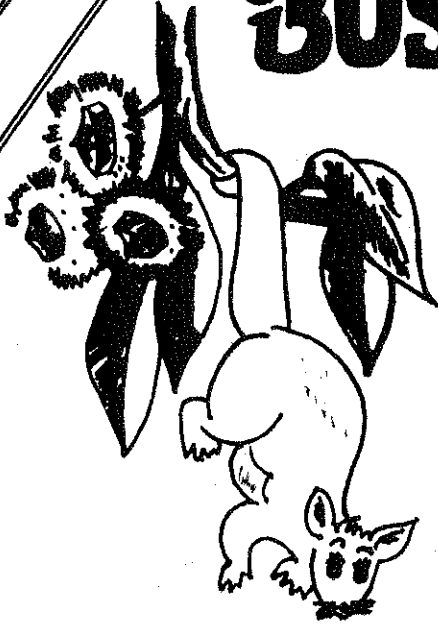
LMCT 104

CLUB CALENDAR 1987

JULY	25	A. G. M. DINNER CABARET THEATRE RESTAURANT BAYSWATER
JULY	28	A. G. M. MEETING & SPECIAL EFFORT DRAW
AUG	1-2	SNOW TRIP Mt. TAMBORITHA AREA MEET LAST BRIDGE OVER WELLINGTON RIVER
AUG	15	BUSH DANCE HEATHERTON HALL HEATHERTON
SEPT	4-6	BARNADOWN RUNAROUND BENDIGO 4X4 (INTERCLUB)
SEPT 19 - OCT	17	COUBURG PENN TRIP FULL TOM
OCT	17-18	BOHO BOUNCE GOULBURN VALLEY 4X4 (INTERCLUB)
NOV	1-2-3	CUP WEEKEND MAYFORD AREA
NOV	15	LADIES DAY GEMBROOK AREA GLORIA
DEC	13	KID'S XMAS PARTY

BUSH.B.Q.

THE BARBEQUE OF THE OUTBACK



simple

strong

highly efficient

compact

open fire cooking

mesh grill

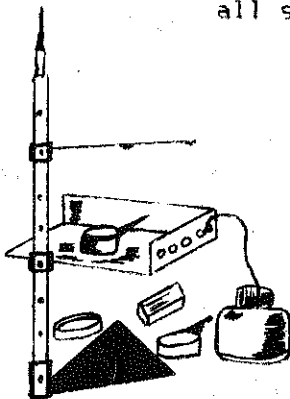
fully engineered

all steel construction

versatile

indoor/outdoor

gas conversion



REALISTICALLY PRICED



ENQUIRIES BUSH B.Q.

9 CORONATION STREET

MT WAVERLEY VIC 3149

TELEPHONE NUMBER

(03) 288 1200